



Young woman by the window

One of the symbols of primary matter. In the metaphysical context, the abstract divine feminine principal is the underlying substance, or the "root of nature" (Mulaprakriti in Sanskrit). One of the meanings of this symbol is its nearly abstract nature, the motive of all things, and is in itself the reason, indivisible and being at the same time cause and consequence.

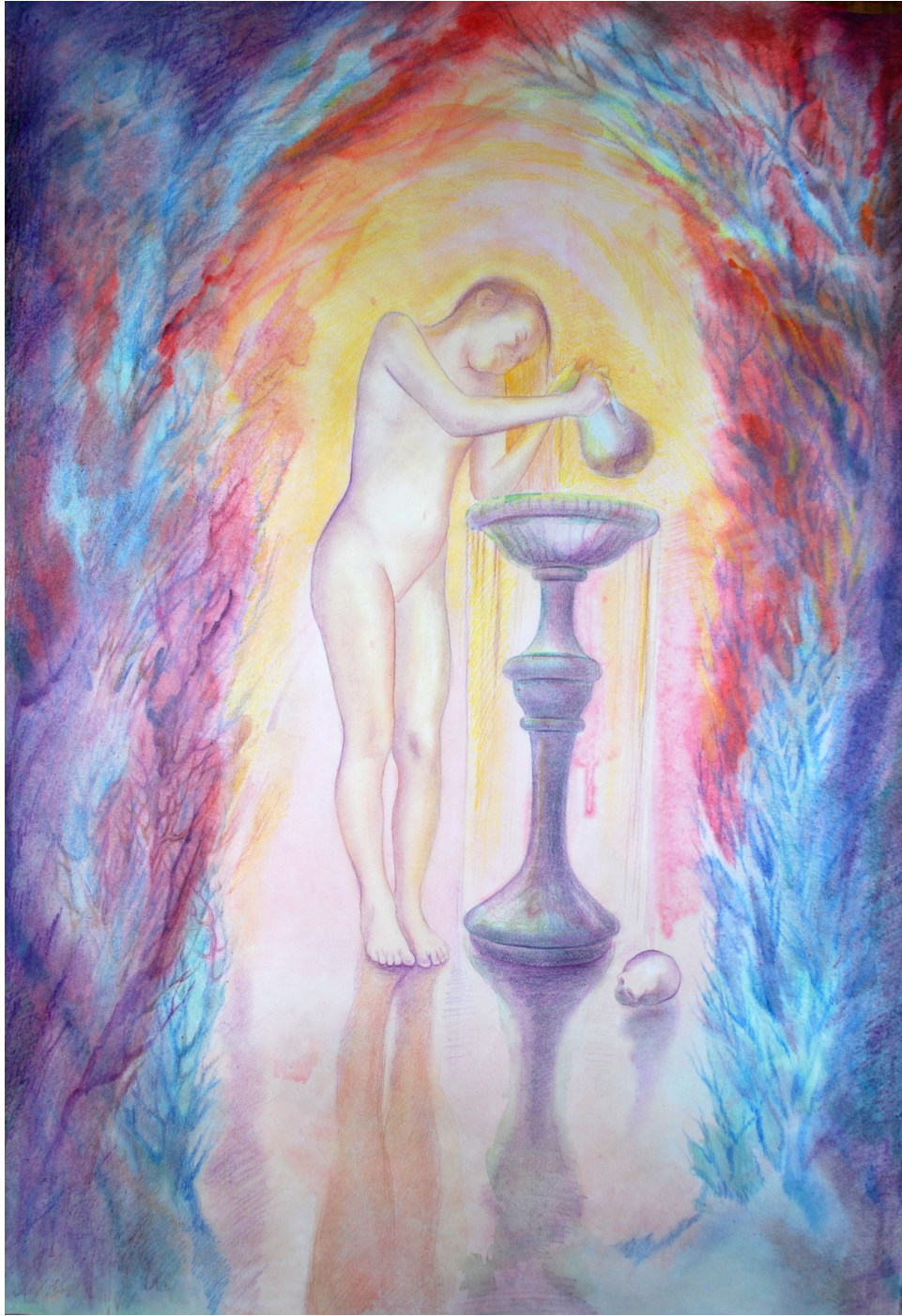
Reaching a certain complexity and connecting with the highest spiritual principals, it becomes the conductor and the physical basis of consciousness.

Perhaps the pre-cosmic substance of metaphysicians, which is the substrate of matter at different stages of its differentiation, is in some way connected with the concept of hypothetical dark matter in astronomy, cosmology, and theoretical physics.



Spirit contemplating itself in the waters of the eternal ocean

In esoteric symbolism, this is the primary manifestation of the principle of life, spreading in the infinite space. In Sanskrit, "Narayana" can be interpreted as "moving over the waters." The bringing of matter into action by reflection of the heavens in the waters is revealed in many mythologies and cosmogonic systems impling order and beauty.



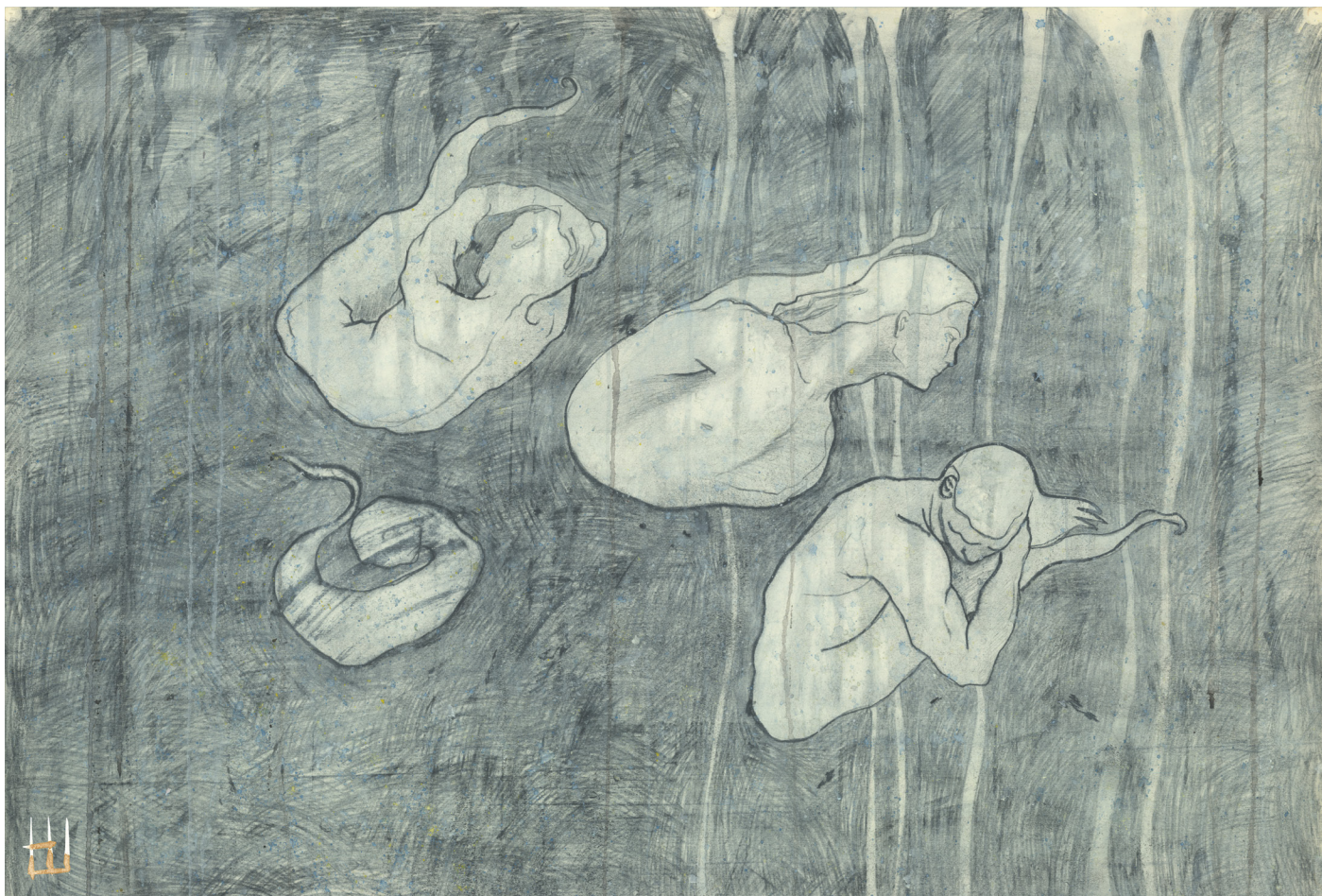
Source nymph

This painting depicts the moment of "returning to the source", when everything at the last point of its cycle is absorbed by its original nature and becomes a pure spirit. The balance of nature, renewal and self-regulation of the biosystem reflects the poetic motif of the source of eternal youth and rebirth.



Moon, child and insect

This composition represents the mystery of life. The germ of existence, endless in its being, is symbolized by the image of a child. Evolving, the germ throws off the old forms, following the cycles of development of the universe and mankind.



Children of the air

This composition is an interpretation of a well-known symbolic subject. In the mythologies and cosmogenesis of different nations, countless emanations of the universe and younger creative spirits represent forces of nature.



Insect mat

This composition reflects the idea of a single principle, permeating all things, through an example of earthly life as relating both to the origin of species and to self-regulation of a closed ecological system. An attempt to remove the acquired distortion of the perception of reality by a person as a result of an “unnatural” lifestyle and rules dictated by the habits of society is revealed.