

## Son of god marries earthly woman

In the mythologies and systems of anthropogenesis, or development of mankind this painting symbolizes the plot of the origin of the human race (and sometimes individual heroes representing it) as the development of the descending branch of cosmic hierarchical creative forces and includes the motive of transmitting the spark of cognizance to humans by gods. In the pantheon of ancient Greek heroes, Fuxi (Fu Hsi) in China, and Paul Gauguin in France, wrote down a similar myth about the origin of the Arioi society and their God 'Oro.



## The Golden Age Series

The Golden Age is a representation that is present in the mythology of many peoples of the world, a blissful (“paradise”) state of primitive mankind, living in harmony with nature. The golden age is invariably accompanied by the mythologemes of “lost paradise” and “noble savage”. This is the archetypal image that underlies any utopia - the era of pure natural humanity from which evolution should begin and end.



## *Des Montagnes.*

*Le symbolisme de ce sujet est multi-niveaux et les fonctions mythologiques de la montagne sont diverses.*

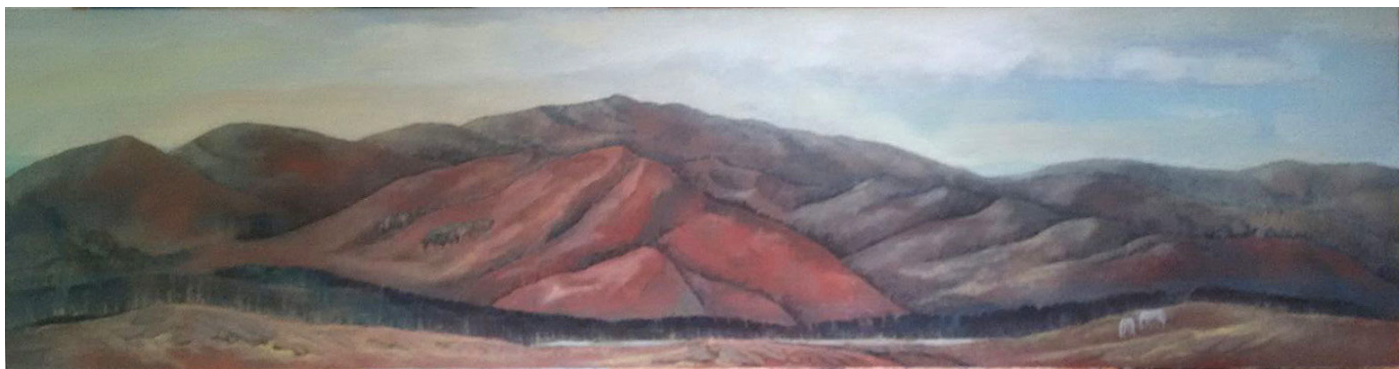
*La montagne présente la variante la plus commune de l'arbre cosmique, un modèle de l'Univers reflétant les éléments de base du processus de création.*

*Elle est placée au centre du Monde, où passe son axe, son sommet est le point de départ de la création. La montagne est associée à une idée de méditation et de développement personnel à une hiérarchie des initiés.*

*Sur le plan spirituel, son sommet représente l'état conscience absolue, sur le plan physique, étant antérieure à l'humanité, la témoin éternelle et silencieuse de nos actes.*

## Discourse for the series "Mountains of the World"

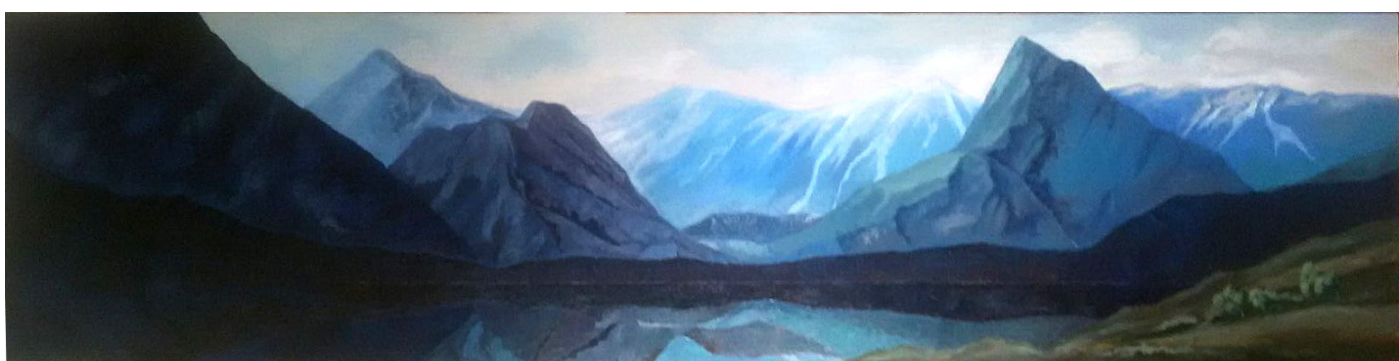
Mountains. The symbolism of this subject is multi-level and the mythological functions of the mountain are diverse. The mountain presents the most common variant of the cosmic tree, a model of the universe reflecting the basic elements of the creation process. It is placed in the center of the World, where its axis passes, its summit is the starting point of creation. The mountain is associated with an idea of meditation and personal development with a hierarchy of initiates. On the spiritual plane, its summit represents the state of absolute consciousness, on the physical plane, being anterior to humanity, the eternal and silent witness of our acts.



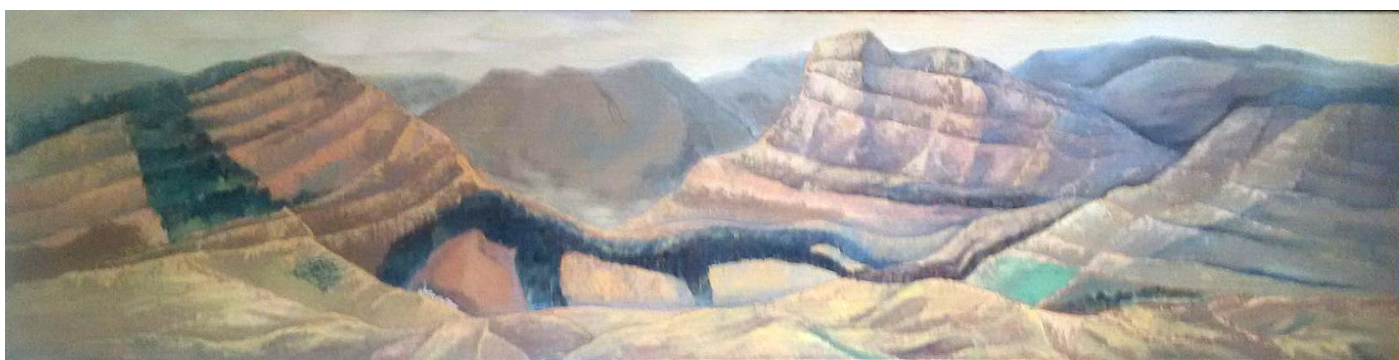
Ural. 2m 35 sm / 65 sm



Alps. 2m 35 sm / 65 sm



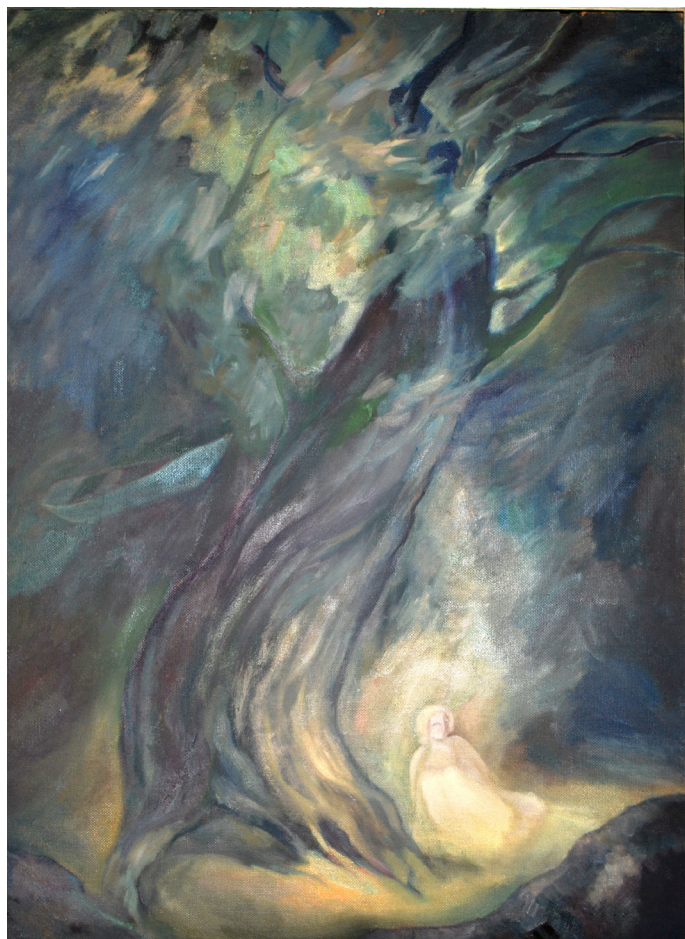
Alai. 2m 35 sm / 65 sm



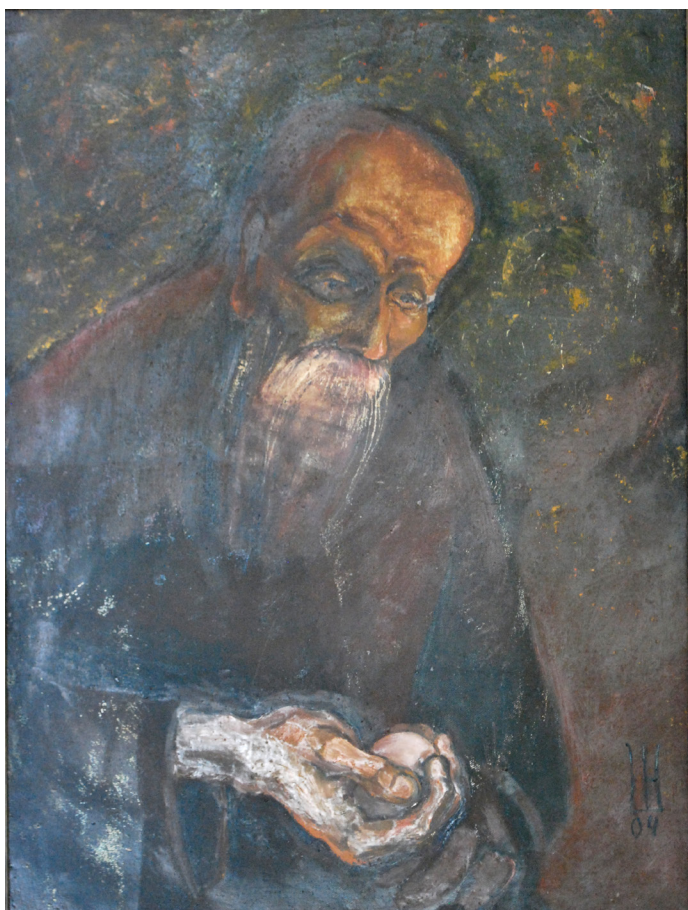
Apennines. 2m 35 sm / 65 sm



Harlequin and Death



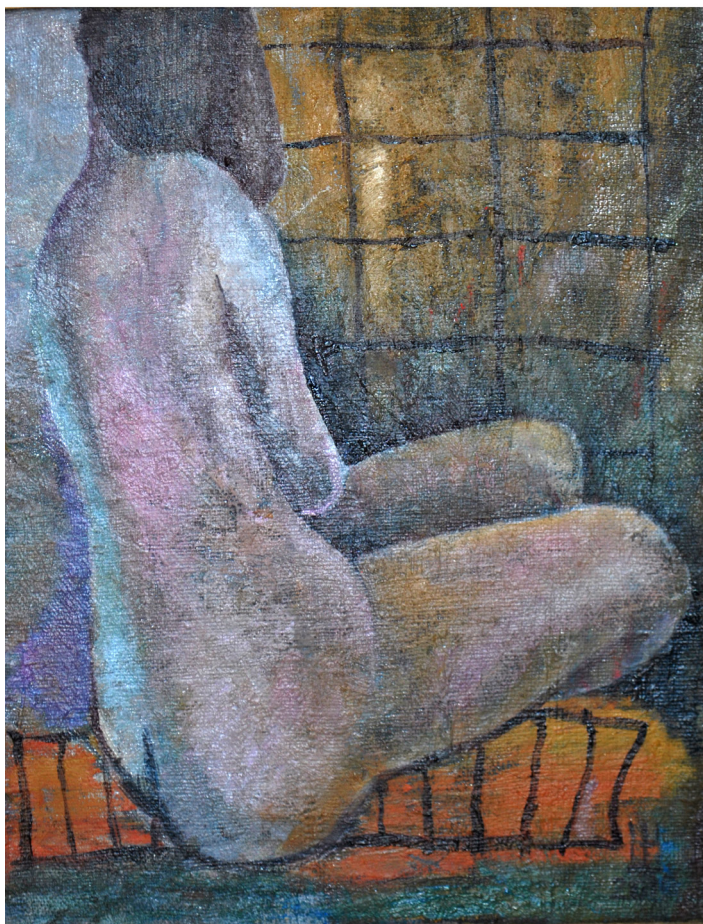
Angel under the tree



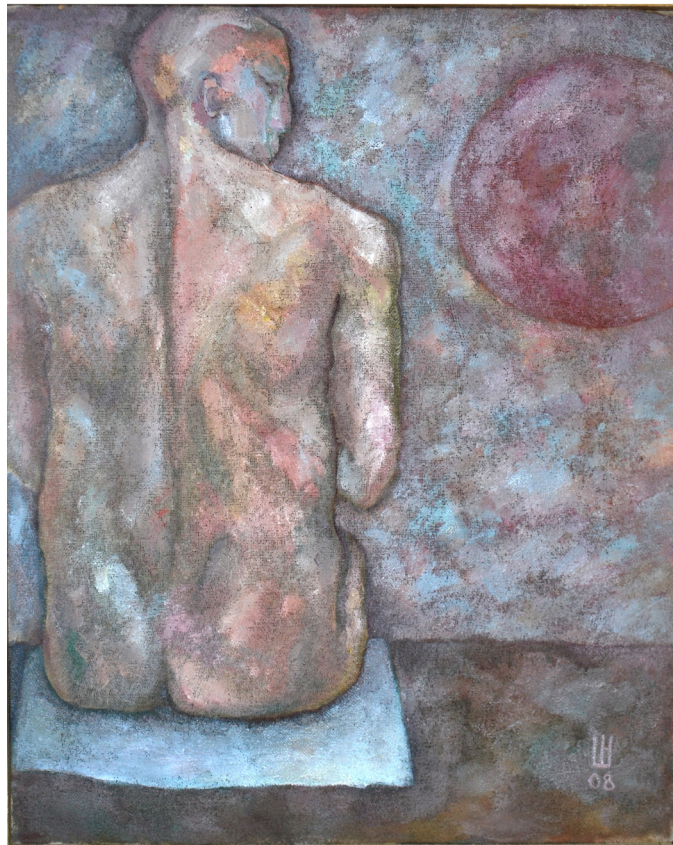
Old man and chicken egg



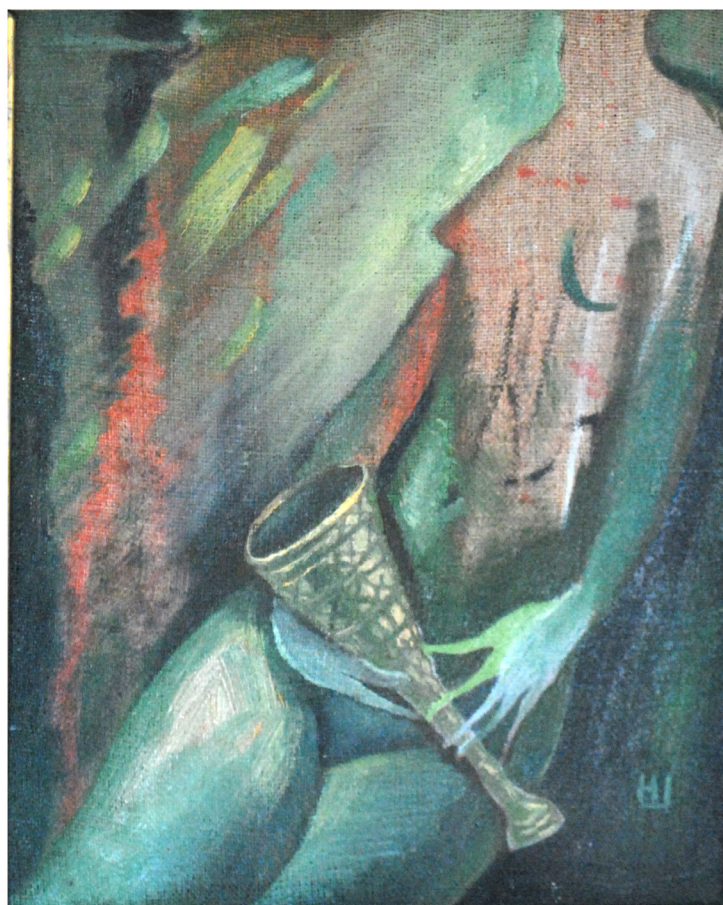
Old woman



Concentration moment



Red Planet



Magic goblet



By the sea



Red wine



White towel